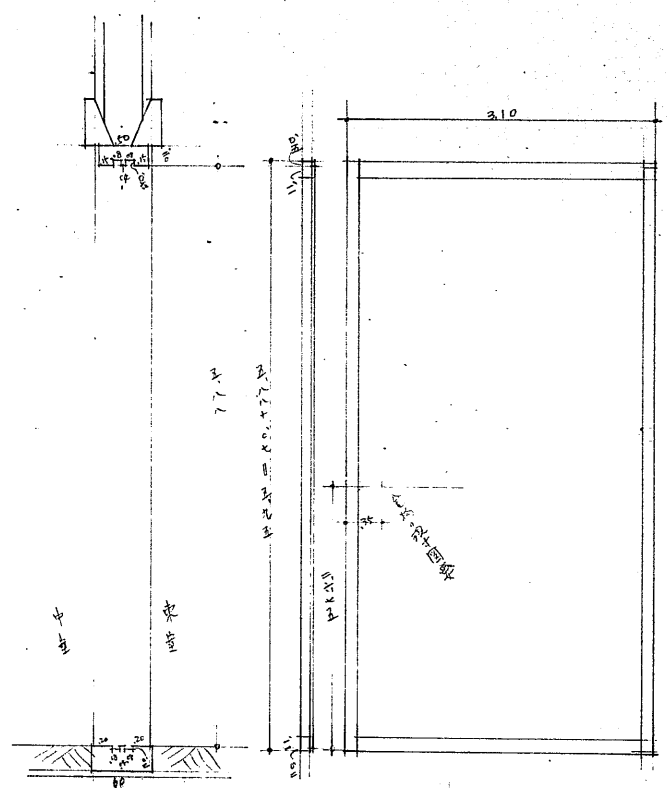


姫路城の内

帯、櫓建具新補施工図

数寄屋棟之部

縮尺十分の一



管板 10 x 19

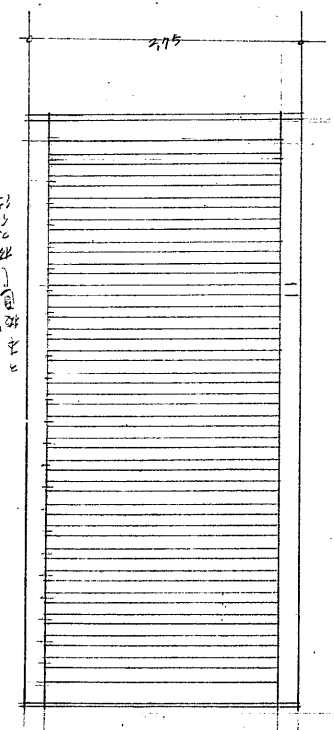
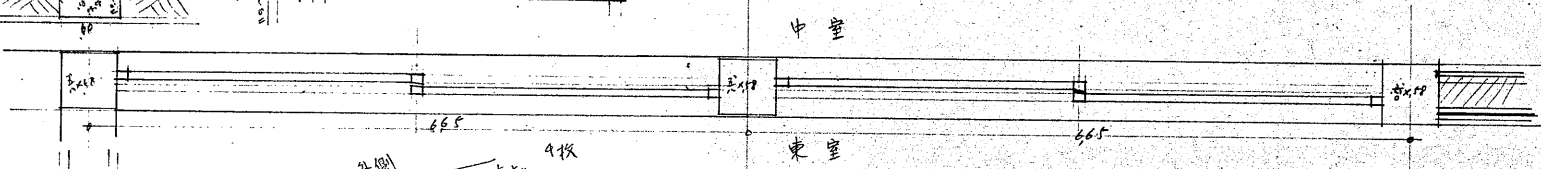
上板 10 x 19 24

摺板 10 x 19 22

588 - 19 - 19 + 09 + 25 = 224

588 - 19 - 19 = 550

085 x 09 24板板



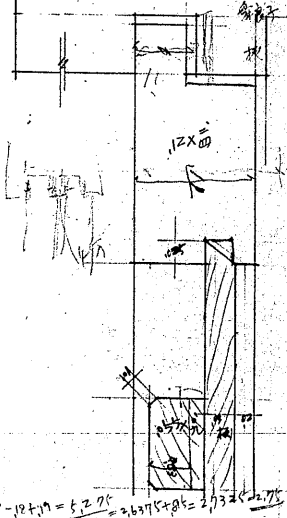
管板 10 x 19

上板 10 x 19 24

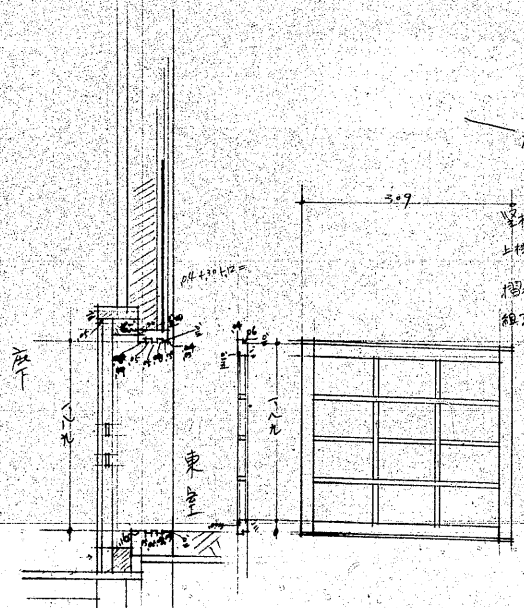
摺板 10 x 19 22

588 - 19 - 19 = 550

085 x 09 24板板



中窓兼長戸4枚



管板 10 x 19

上板 10 x 19 24

摺板 10 x 19 22

細子 07 x 05

