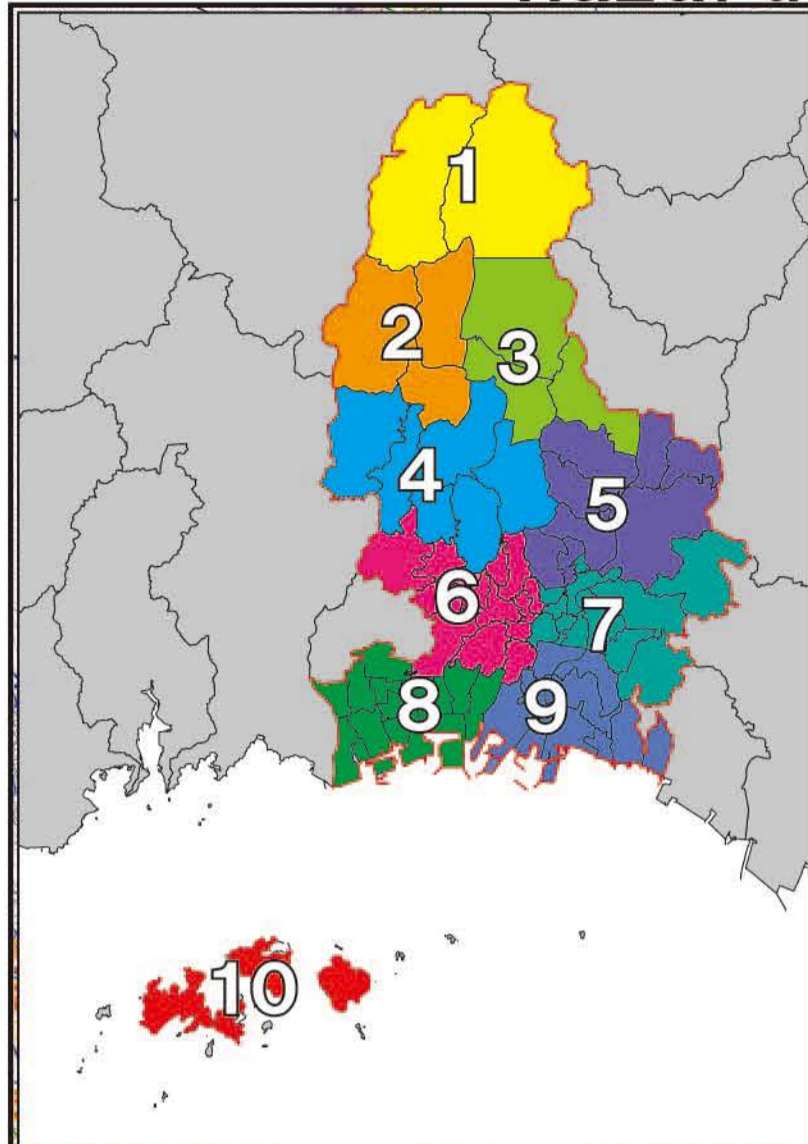
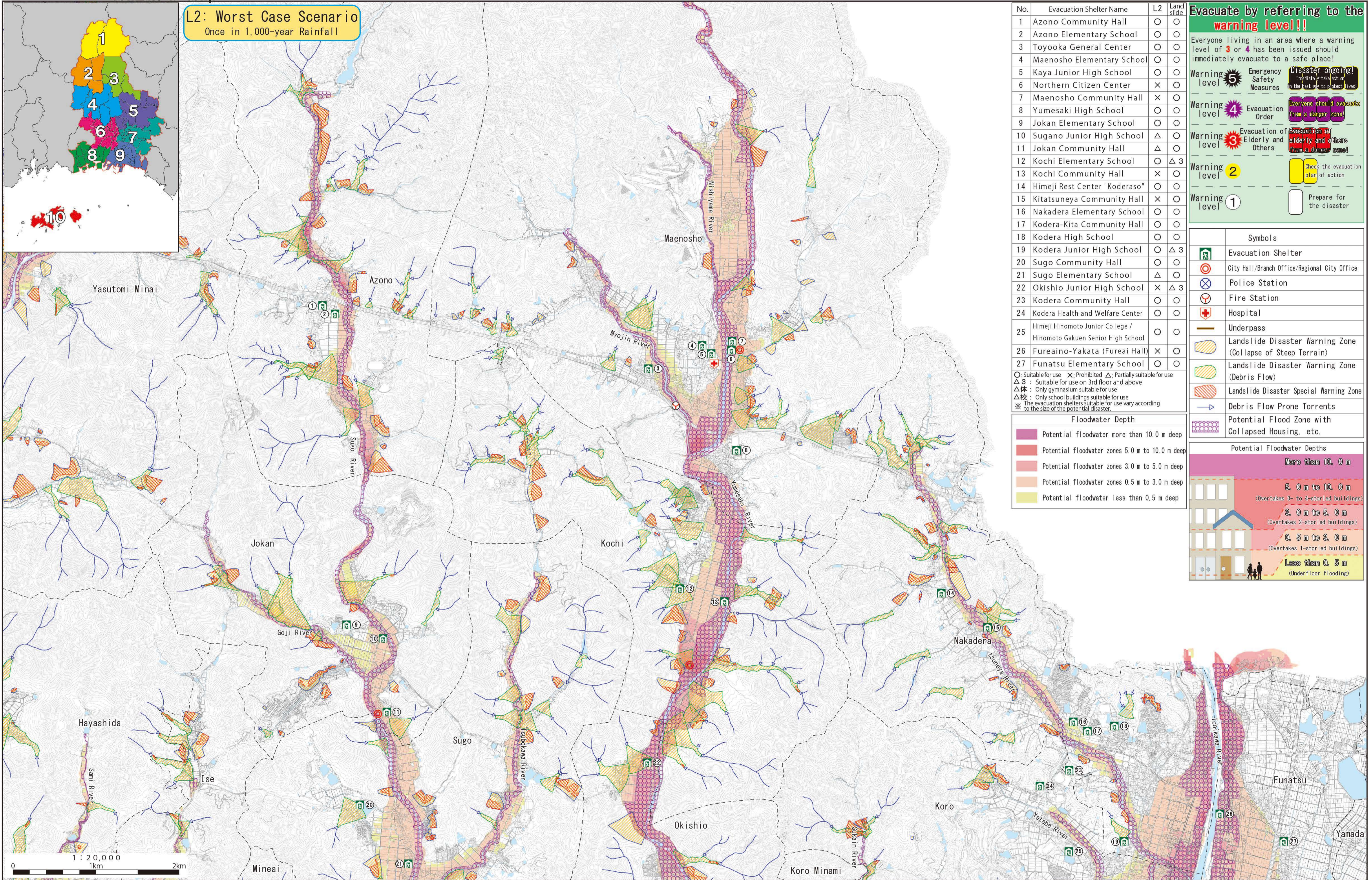


# Permanent Edition Himeji City Flood/Landslide Disaster Hazard Map Wide Area 3

The Flood/Landslide Disaster Hazard Map anticipates damage caused by flooding and landslide disasters and forecasts the scope of this damage on the map. This information includes potential flood zones as well as floodwater depths. The possible flood zones shown in this map forecast rivers overflowing with water due to the highest amount of rainfall thought possible in Hyogo Prefecture (L2: largest potential rainfall is equivalent to a 1,000-year rainfall). This information also includes the potential scope of housing collapse near rivers due to bank erosion and flood waters. Hyogo Prefecture surveyed potential landslide disaster zones for this landslide disaster information according to the Act on Sediment Disaster Countermeasures for Sediment Disaster Prone Areas. This map shows areas designated as landslide disaster warning zones and landslide disaster special warning zone.



**L2: Worst Case Scenario**  
Once in 1,000-year Rainfall



No.	Evacuation Shelter Name	L2	Land slide
1	Azono Community Hall	○	○
2	Azono Elementary School	○	○
3	Toyooka General Center	○	○
4	Maenosho Elementary School	○	○
5	Kaya Junior High School	○	○
6	Northern Citizen Center	×	○
7	Maenosho Community Hall	×	○
8	Yumesaki High School	○	○
9	Jokan Elementary School	○	○
10	Sugano Junior High School	△	○
11	Jokan Community Hall	△	○
12	Kochi Elementary School	○	△ 3
13	Kochi Community Hall	×	○
14	Himeji Rest Center "Koderaso"	○	○
15	Kitatsuneya Community Hall	×	○
16	Nakadera Elementary School	○	○
17	Kodera-Kita Community Hall	○	○
18	Kodera High School	○	○
19	Kodera Junior High School	○	△ 3
20	Sugo Community Hall	○	○
21	Sugo Elementary School	△	○
22	Okishio Junior High School	×	△ 3
23	Kodera Community Hall	○	○
24	Kodera Health and Welfare Center	○	○
25	Himeji Hinomoto Junior College / Hinomoto Gakuen Senior High School	○	○
26	Fureaino-Yakata (Fureai Hall)	×	○
27	Funatsu Elementary School	○	○

○: Suitable for use    ×: Prohibited    △: Partially suitable for use  
 △ 3: Suitable for use on 3rd floor and above  
 △ 棟: Only gymnasium suitable for use  
 △ 校: Only school buildings suitable for use  
 ※: The evacuation shelters suitable for use vary according to the size of the potential disaster.

Floodwater Depth	
	Potential floodwater more than 10.0 m deep
	Potential floodwater zones 5.0 m to 10.0 m deep
	Potential floodwater zones 3.0 m to 5.0 m deep
	Potential floodwater zones 0.5 m to 3.0 m deep
	Potential floodwater less than 0.5 m deep

**Evacuate by referring to the warning level!!**

Everyone living in an area where a warning level of 3 or 4 has been issued should immediately evacuate to a safe place!

**Warning level 5** Emergency Safety Measures **Disaster ongoing!** Immediately evacuate in the best way to protect lives!

**Warning level 4** Evacuation Order **Everyone should evacuate** from a danger zone!

**Warning level 3** Evacuation of Elderly and Others **Evacuation of elderly and others** from a danger zone!

**Warning level 2** Check the evacuation plan of action

**Warning level 1** Prepare for the disaster

**Symbols**

- Evacuation Shelter
- City Hall/Branch Office/Regional City Office
- Police Station
- Fire Station
- Hospital
- Underpass
- Landslide Disaster Warning Zone (Collapse of Steep Terrain)
- Landslide Disaster Warning Zone (Debris Flow)
- Landslide Disaster Special Warning Zone
- Debris Flow Prone Torrents
- Potential Flood Zone with Collapsed Housing, etc.

**Potential Floodwater Depths**

- More than 10.0 m**
- 5.0 m to 10.0 m** (Overtakes 3- to 4-storied buildings)
- 3.0 m to 5.0 m** (Overtakes 2-storied buildings)
- 0.5 m to 3.0 m** (Overtakes 1-storied buildings)
- Less than 0.5 m** (Underfloor flooding)

